



We are women of covenant! Every time we watch over one another, Godlike qualities of love, patience, kindness, generosity, and spiritual commitment fill the souls of those we visit and enlarge our souls as well. In the process, we honor our covenants ~Sister Bonnie D. Parkin

Thank you for your willingness to be a visiting teacher, please make sure after you have finished for the month, you report to your VT Supervisor.

Visiting Teaching Partner is:

You are assigned to:

Visiting Teacher Supervisor



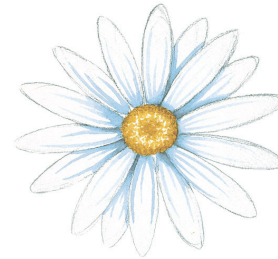
We are women of covenant! Every time we watch over one another, Godlike qualities of love, patience, kindness, generosity, and spiritual commitment fill the souls of those we visit and enlarge our souls as well. In the process, we honor our covenants ~Sister Bonnie D. Parkin

Thank you for your willingness to be a visiting teacher, please make sure after you have finished for the month, you report to your VT Supervisor.

Visiting Teaching Partner is:

You are assigned to:

Visiting Teacher Supervisor



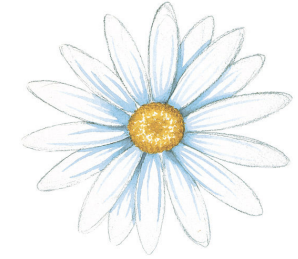
We are women of covenant! Every time we watch over one another, Godlike qualities of love, patience, kindness, generosity, and spiritual commitment fill the souls of those we visit and enlarge our souls as well. In the process, we honor our covenants ~Sister Bonnie D. Parkin

Thank you for your willingness to be a visiting teacher, please make sure after you have finished for the month, you report to your VT Supervisor.

Visiting Teaching Partner is:

You are assigned to:

Visiting Teacher Supervisor



We are women of covenant! Every time we watch over one another, Godlike qualities of love, patience, kindness, generosity, and spiritual commitment fill the souls of those we visit and enlarge our souls as well. In the process, we honor our covenants ~Sister Bonnie D. Parkin

Thank you for your willingness to be a visiting teacher, please make sure after you have finished for the month, you report to your VT Supervisor.

Visiting Teaching Partner is:

You are assigned to:

Visiting Teacher Supervisor





